

# DIKGATLONG LOCAL MUNICIPALITY



## ADVERTISEMENT: FORMAL WRITTEN PRICE QUOTATION FOR SEVEN DAYS NOTICE

**BID NO: RFQ16/2024/25**

**Dikgatlong Municipality** hereby invites suitably prospective service providers to quote for alterations and/or renovations to offices for the Dikgatlong Traffic Department at Barkly West. **Sealed** Price quotations clearly marked **"RFQ16/2024/25 ALTERATIONS AND/OR RENOVATIONS TO OFFICES FOR THE DIKGATLONG TRAFFIC DEPARTMENT"** endorsed on the envelope" must be submitted to the Dikgatlong Local Municipality, 33 Campbell Street, Barkly West, 8375. Bids **must** reach the municipality before **12h00 on Monday the 14<sup>th</sup> of October 2024.**

## BACKGROUND AND SPECIFICATIONS/ SCOPE OF WORK PURPOSE

Alterations and/or renovations to offices for the dikgatlong traffic department

**Please also see the accompanying annexure A for bill of quantities and Annexure B for Drawings**

1. Late, emailed, faxed, incomplete quotes will not be considered.
2. All quotes will be adjudicated and awarded in terms of the Dikgatlong Local Municipality Procurement and Supply Chain Management Policy, the Preferential Procurement Policy Framework Act, Act No. 5 of 2000 and the regulations promulgated under this Act. This bid is subject to the General Conditions of Contract and, if applicable, any other Special Condition of Contract.
3. Quotes must be valid for a period of 30 days
4. **Suppliers must submit their quotes with the following documentation and or information:**
  - 4.1 A valid original Tax Clearance certificate or a valid tax pin.
  - 4.2 A certificate certifying that the bidder has no undisputed commitments for Municipal services towards a municipality or service provider i.r.o. payments which are overdue

more than 90 days; if the bidder is the lessee a valid lease agreement together with the municipal account of the landlord; or a letter from tribal authority if the service provider operates in rural area.

4.3. Certified copies of directors or owners that are not older than 3 months.

4.4. **MBD 4, 6.1, 8 and 9 must be fully completed and submitted together with a quotation.**

4.5. Bidders must be registered on the Central Supplier Data Base.

4.6. The tender will be evaluated in terms of the **80/20** preference points system of which 80 points will be for price and 20 points for specific goals (**HDI and Locality**) as illustrated below.

SPECIFIC GOALS		
Historical disadvantaged Individuals (10 max points)	Locality (10 max points)	
Number of Points for HDI	Locality	Number of Points for Locality
10 points will be awarded to the service provider with more than 50% ownership of the business by HDI.	Within the boundaries of Dikgatlong Local Municipality	10
	Within the boundaries of Frances Baard District Municipality	8
	Within the boundaries of Northern Cape	6
	Within the boundaries of South Africa	4

4.7. The Municipality does not bind itself to accept the lowest or any bid and reserves the right to accept the whole or only part of a bid if (a) the bid amounts received are too high; (b) the bids do not comply with the specific bid goals; or (c) objective criteria exist which justify or necessitate the non-acceptance of any bids.

4.8. Address and the vat number (4450111283) of the municipality must appear on the quote.

4.9. Failure to meet the above requirements or submission of documents will lead to either non-responsiveness of the quotation or losing of points for specific goals.

**4.10. CIDB Grading (1GB)**

5. SCM enquiries should be addressed to [m.gawuzela@dikgatlong.gov.za](mailto:m.gawuzela@dikgatlong.gov.za) or 053 531 6500

**Ms B Tsinyane**

**Acting Municipal Manager**

**Notice date: 04/10/2024**

## Dikgatlong Municipality: Alterations at Traffic Department

## BILL OF QUANTITIES

ITEM	DESCRIPTION	UNIT	QTY	RATE	AMOUNT
	<p>Tenderers are advised to visit the site and to satisfy themselves as to the nature and extent of the work to be done and provide in their tenders for any item not specifically mentioned which they may deem necessary for the proper completion of the work.</p> <p>All building rubble must be removed from the site on completion.</p> <p><b>Protection</b></p> <p>In taking down and removing existing work the utmost care is to be observed to avoid any structural or other damage to the remaining portions of the building(s). The contractor must also protect all work not removed such as walls, floors, doors, windows or other joinery, loose and fixed fittings and electrical appliances, etc. from damage during the progress of the work and provide all necessary materials for so doing. The contractor will be held solely responsible for any damage to persons or property and for the safety of the structure throughout the whole of this contract and must make good at his own expense any damage that may occur.</p>				
1	<p><b>CARPENTRY AND JOINERY</b></p> <p><b>SUPPLEMENTARY PREAMBLES</b></p> <p>Fixing</p> <p>Items described as "nailed" shall be deemed to be fixed with hardened steel nails or pins, or to be shot pinned, to brickwork or concrete</p> <p>Joinery</p> <p>Descriptions of frames shall be deemed to include frames, transomes, rails, etc.</p>				
1.1	<p><b>DOORS, ETC.</b></p> <p>Semi-solid flush panel door with laminated Kiln dried softwood core and 6mm ultraboard crossbanding. Doors supplied with hardwood edge strips post lipped and flush panels of commercial veneer both sides and hung to steel frames.</p>				
1.1.1	40mm Door, size 813 x 2032mm high	No	4		
Sub-total (to be taken forward)					

ITEM	DESCRIPTION	UNIT	QTY	RATE	AMOUNT
Sub-total (brought forward)					
2	<b>CEILINGS, PARTITIONS AND ACCESS FLOORING</b> <b>SUPPLEMENTARY PREAMBLES</b>  Fixing Items described as "nailed" shall be deemed to be fixed with hardened steel nails or shot pins to brickwork or concrete.  Items described as "plugged" shall be deemed to include screwing to fibre, plastic or metal plugs at not exceeding 600mm centres, and where described as "bolted" the bolts have been given elsewhere.  Steel components All steel components for ceilings, partitions, etc are to be galvanised in accordance with SANS 121.				
2.1	<b>PARTITIONS, ETC.</b> <b>FIXED PARTITIONS</b> RhinoWall Hi strength system or similar approved drywall partition systems with 58mm stud, 15mm steel stud drywall to both sides and a 60min narrow wall fire rating.  Drywall partitioning shall comprise steel studding formed of 58mm top and bottom tracks with vertical studs at maximum 600mm centres, friction fitted or pop riveted to the top and bottom tracks with similar additional vertical studs as necessary at abutments, ends, etc and covered as described with wallboard screwed to studding with "Drywall" screws at maximum 220mm centres. Boards are to be butt jointed and finished with "Rhino" tape and "Ready mix D" jointing compound all in accordance with the abutments are measured separately and descriptions manufacturer's instructions. Intersections and abutments are measured separately and descriptions shall be deemed to include any additional studs, corner beads, jointing compound, tape, etc.  Note: Wall paper and/or paint and varnish finishes are measured elsewhere.				
2.1.1	Partitions 3223m high with bottom track plugged and top track fixed to suspended ceiling tees.	m	82		
2.1.2	Partitions 2500m high with bottom and top tracks plugged	m	7		
2.1.3	Extra over partition 3223m high for vertical abutment	No	6		
2.1.4	Extra over partition 2500m high for vertical abutment	No	9		
2.1.5	Extra over partition 3223m high for T-intersection	No	4		
Sub-total (to be taken forward)					

ITEM	DESCRIPTION	UNIT	QTY	RATE	AMOUNT
Sub-total (brought forward)					
2.1.6	Extra over partition 2500m high for T-intersection	No	3		
2.1.7	Doors Extra over partition dry wall for frame for door size 813 x 2032mm high	No	4		
2.1.8	Insulation 75mm Thick fibreglass insulation blanket in cavity of partitioning (Provisional)	m²	54		
3	<b>IRONMONGERY</b> <b>SUPPLEMENTARY PREAMBLES</b> Proprietary items  Where applicable the manufacturers' names or product catalogue titles are given in sub-headings preceding the items  Prices are to be based on the specific products/articles specified. If tenderers wish to offer alternative products/articles for certain items, these items are to be clearly marked and the alternative specification given with supporting brochures etc clarifying the features of the products/articles offered. On request returnable samples are to be provided to the principal agent for consideration.  Finishes to ironmongery Where applicable finishes to ironmongery are indicated by suffixes in accordance with the following list:  BS Satin bronze lacquered CH Chromium plated SC Satin chromium plated SE Silver enamelled GE Grey enamelled AN Anodised natural AS Anodised silver AB Anodised bronze AG Anodised gold ABL Anodised black PB Polished brass PL Polished and lacquered PT Epoxy coated SD Sanded				
Sub-total (to be taken forward)					



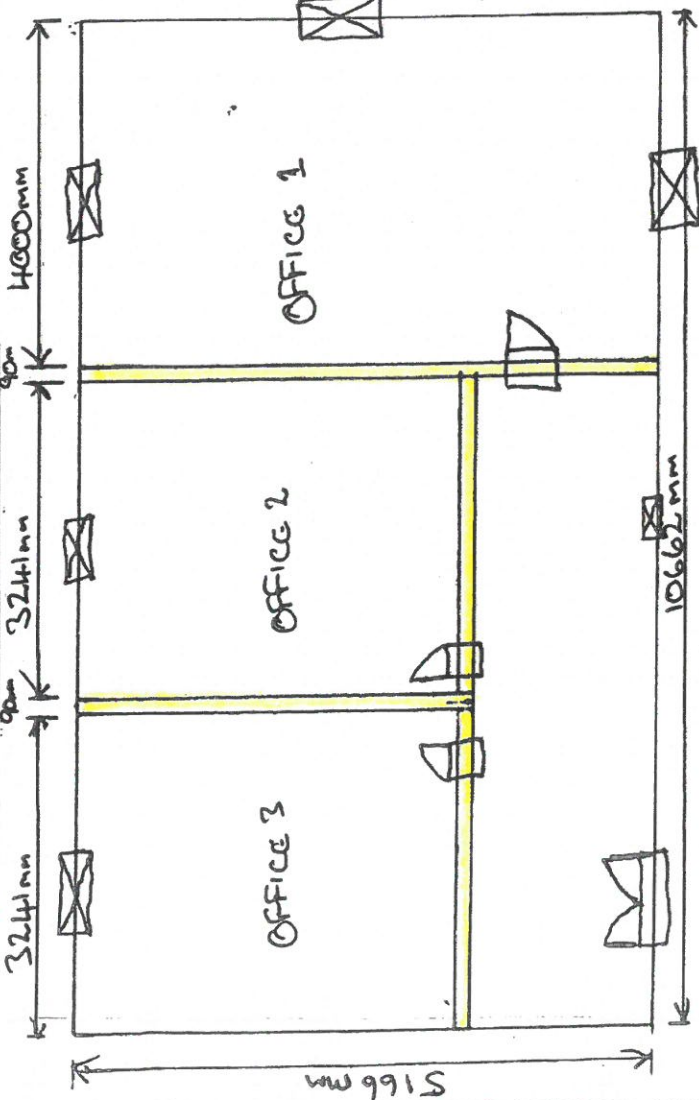
ITEM	DESCRIPTION	UNIT	QTY	RATE	AMOUNT
Sub-total (brought forward)					
3.1	<b>LOCKS, HANDLES, ETC.</b> Locks, etc.				
3.1.1	Commercial quality Euro profile cylinder lock case (L-2209-78) with and including Euro profile single cylinder (2x20PL) as per Union or similar approved.	No	4		
3.1.2	Handles Anodised aluminium lever handle on 152 x 76 x 3mm backplate for Euro profile as per Union "Waterbok" (pair) AL6W63-05AS or similar approved.	No	4		
4	<b>METALWORK</b> <b>SUPPLEMENTARY PREAMBLES</b> Metalwork: All metalwork that is not galvanized must be thoroughly cleaned with a wire brush to remove all traces of surface rust and must be factory primed with one coat of red oxide zinc chromate primer (SABS 909) after manufacture. All steel work to be 350 Grade W steel. Remove from metal all burs and sharp edges and grind smooth all welded joints.  Descriptions of bolts, anchors, etc Descriptions of bolts shall be deemed to include nuts and washers.  Descriptions of expansion anchors and bolts and chemical anchors and bolts shall be deemed to include nuts, washers and mortices in brickwork or concrete.  Items described as "holed for bolt(s)" shall be deemed to exclude the bolts unless otherwise described.  Items described as "plugged" shall be deemed to include screwing to fibre, plastic or metal plugs at not exceeding 600mm centres.				
4.1	<b>SECURITY GATES</b> The following gates have been measured as a complete units and the components of the units have not been separately measured. The descriptions, therefore, of such units shall be deemed to include frame, fixing bolts, hinges, all components, assembling, welding, lock box, lock, padbolt, padlock, barrel bolts, etc. (paint elsewhere measured).				
4.1.1	Single swing gate size 1526 x 2110mm high with and including padbolt for and including 50mm brass padlock.	No	2		
Sub-total (to be taken forward)					

ITEM	DESCRIPTION	UNIT	QTY	RATE	AMOUNT
<b>Sub-total (brought forward)</b>					
5	<b>TILING</b> <b>SUPPLEMENTARY PREAMBLES</b> Fixing Unless described as "fixed with adhesive to plaster (plaster elsewhere)" descriptions of tiling on brick or concrete walls, columns, etc shall be deemed to include 1:4 cement plaster backing and descriptions of tiling on concrete floors, etc. shall be deemed to include 1:3 plaster bedding. Tiling described as "fixed with adhesive on power floated concrete" shall be deemed to include for approved tiling key coat. Ceramic, porcelain, marble and granite tiles are to be fixed and grouted with suitable adhesives and grouts from the "Tal Professional" range of products as recommended by the manufacturer of the tiles.				
5.1	<b>FLOOR TILING</b> Allow the PC amount of R140.00/m <sup>2</sup> (VAT included) 300 x 300 x 8mm first grade porcelain floor tiles fixed with approved adhesive according to manufacturers instructions to cement screed (elsewhere measured) and flush pointed with grout.				
5.1.1	On Floors	m <sup>2</sup>	57		
5.1.2	100mm High Skirting	m	33		

<b>Sub-total</b>	
<b>15% Vat</b>	
<b>Total</b>	



# Dikgatlong Technical Building



## LEGEND

PARTITIONS



Dikgatlong Technical Offices:  
Traffic Department Offices

Sketchplan  
(Not to Scale)

September 2024

